

HabasitLINK[®]

M2531 Raised Rib 1"



Your Source For Habasit
Belting And Chain

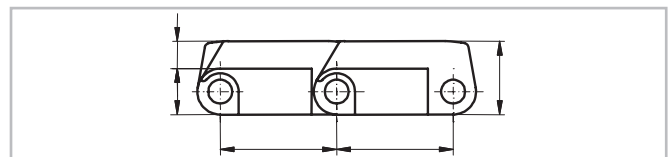
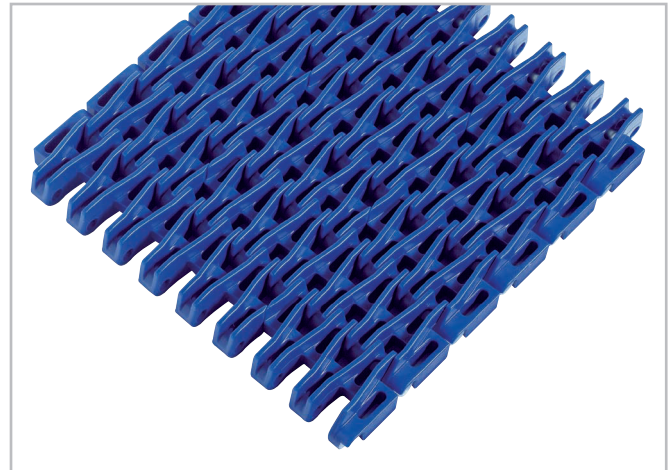
www.StilesEnterprises.com • 1-800-325-4232

Description

- 35% open area; 75% open contact area; largest opening 5.5x7 mm (0.22"x0.28")
- Excellent for cooling and draining
- Food approved materials available
- Rod diameter 5 mm (0.2")

Available accessories

- Combs (finger transfer plates)



Belt data

Belt material		PP	POM	
Rod material		PP		PA
Nominal tensile strength F' _N straight run	N/m lb/ft	16000 1096	19000 1300	27000 1850
Temperature range	°C	5 - 105	5 - 93	-40 - 93
	°F	40 - 220	40 - 200	-40 - 200
Belt weight m _B	kg/m ²	6.8	10.4	10.4
	lb/sqft	1.40	2.13	2.13

Diameter of idling rollers (minimum)		Diameter of support rollers (minimum)		Diameter for gravity take-up and center drive rollers (minimum)		Backbending radius for elevators without sideguards or hold down devices (minimum)	
mm	inch	mm	inch	mm	inch	mm	inch
40	1.6	50	2	100	4	150	6

Standard range of belt widths b₀

mm (nom.)	150	200	250	300	350	400	450	500	550	600	650	700	750	800	etc.
inch (nom.)	6	8	10	12	14	16	18	20	22	24	26	28	30	32	etc.

Real belt widths are in most cases 0.1% to 0.3% wider.

Standard belt widths in increments of 50 mm (2"). Non-standard widths are offered in increments of 16.66 mm (0.66"). Smallest possible width 83.4 mm (3.25").

For detailed material properties refer to the HabasitLINK[®] Engineering Guidelines or contact your Habasit representative.

The nominal tensile strength is valid for 23 °C (73 °F). The admissible tensile force depends on the operating temperature near the drive sprockets. Within the temperature range allowed, the admissible tensile force may vary from 100% to 20% of the nominal tensile strength. For detailed information and correct calculation of effective tensile force refer to the Calculation Guide in the HabasitLINK[®] Engineering Guidelines.